



Justrite Safety Group

Dry Areas - Medium Duty Polyurethane Mats

# 451 Skywalker® II PUR



451 SKYWALKER® II PUR

Dry Areas - Medium duty

# 451 Skywalker® II PUR

High-quality polyurethane foam anti-fatigue mats are reputed for their ultimate comfort in stationary standing positions. Its key characteristic of high thermal insulation performance is owed to a uniform closed cell structure wherein gas remains trapped. The integral skin adds to the compression force deflection properties (>120 according to ASTM 3574C), provides resistance to wear and is non-porous. Environmental friendly, produced without the use of organic carbon-based blowing agents, therefore free of Freon. All four sides have bevelled edges to minimize tripping hazards.

Ideal for stationary standing workstations, sit-stand desks, packing stations, office environments, reception areas, wait stations, service counters, cashiers.

#### Recommended use:

- Medium duty
- Dry areas
- Ideal for stationary standing workstations, sit-stand desks, packing stations, office environments, reception areas, wait stations, service counters, cashiers

#### Specifications:

- Polyurethane foam
- Bevelled edges on all sides
- Overall thickness: 14 mm
- Weight: 4.8 kg/m<sup>2</sup>

#### Standard sizes:

- 65cm x 90cm
- 65cm x 135cm
- 65cm x 175cm
- 90cm x 125cm
- 90cm x 155cm
- 90cm x 185cm

#### Colours:

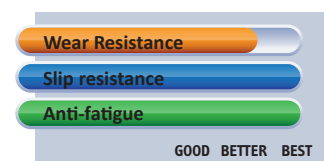
- Grey

#### Cleaning instructions:

- Daily sweeping with a brush

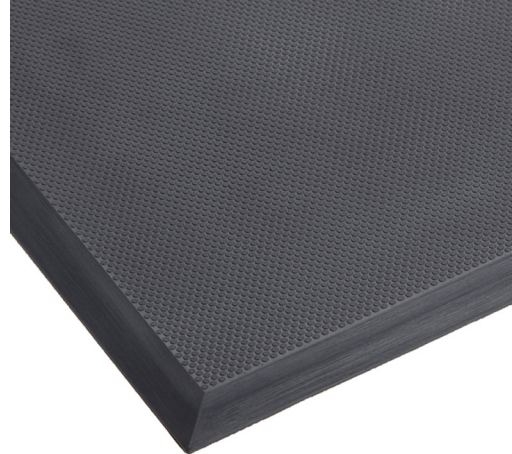


#### PRODUCT TESTING



## 451 Skywalker® II PUR (grey)

Art. nr.	Dimensions	Weight kg
451S0023GY	65cm x 90cm	2.7
451S0026GY	65cm x 175cm	5.3
451S0034GY	90cm x 125cm	5.2
451S0035GY	90cm x 155cm	6.7
451S0036GY	90cm x 185cm	7.7
451S2454GY	65cm x 135cm	3.9



# 451 Skywalker® II PUR

## GENERAL DESCRIPTION

<b>Designation</b>	Ergonomic, Anti-fatigue Safety Matting
<b>Type</b>	Dry Areas - Medium Duty Polyurethane Mats
<b>Description</b>	High-quality polyurethane foam with pebble surface provides sure footing and allows freedom of movement.
<b>Surface</b>	Structured pebble pattern
<b>Category</b>	Ergonomic, Anti-fatigue Safety Matting
<b>Recommended use</b>	Dry Areas Medium duty
<b>Colours</b>	Grey
<b>Edges</b>	Bevelled edges on all sides

## TECHNICAL SPECIFICATIONS

<b>Material</b>	Polyurethane foam
<b>Process</b>	Injection Moulding
<b>Total weight</b>	4.8 kg/m <sup>2</sup>
<b>Overall thickness</b>	14 mm

## TESTS

<b>Abrasion resistance</b>	ASTM D3884-01	150 Mg (2.5 N)
<b>Tear Strength</b>	ASTM D1004	1,7 N/mm
<b>Hardness</b>	ASTM D2240-02	25 Shore A
<b>Surface flammability</b>	ASTM D2859	Pass

## DIMENSIONS

<b>Standard sizes</b>	<b>Full rolls</b>	<b>Custom lengths</b>
65cm x 90cm		
65cm x 135cm		
65cm x 175cm		
90cm x 125cm		
90cm x 155cm		
90cm x 185cm		